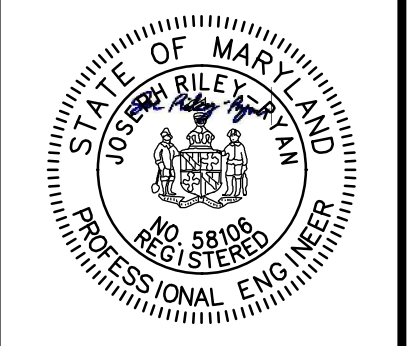


Bowman Consulting Group, Ltd.
 13461 Sunrise Valley Drive
 Suite 500
 Herndon, Virginia 20171
 Phone: (703) 464-1000
 Fax: (703) 481-9720
 www.bowman.com
 © Bowman Consulting Group, Ltd.

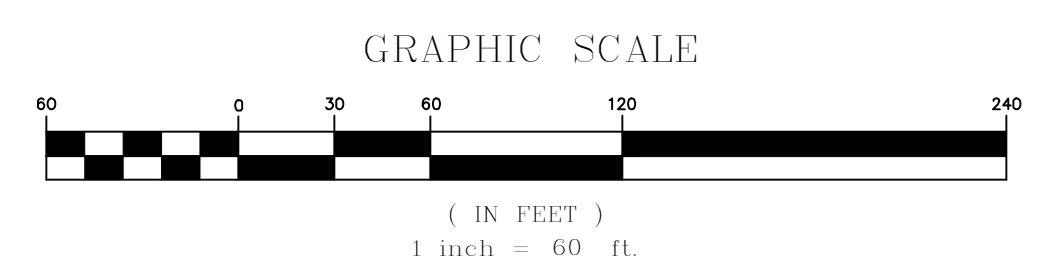
EXISTING ROAD MARKINGS
MOT PLAN
 16001 KRISTA WAY, ACCOKEEK, MARYLAND 20607
 PRINCE GEORGES COUNTY, MARYLAND

COUNTY PROJECT NUMBER

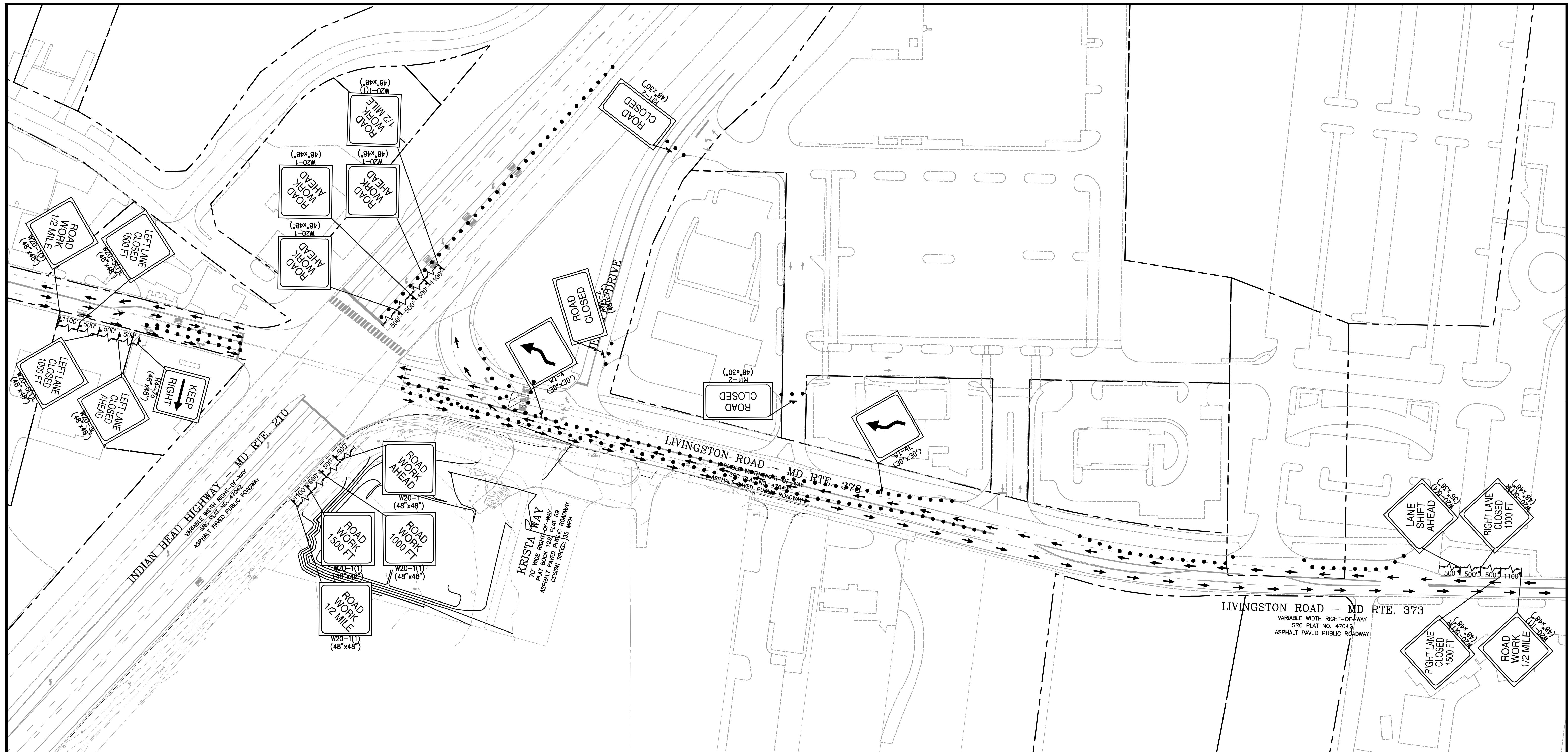


PLAN STATUS
 9/8/23 MOT 1ST SUBMISSION

DATE	DESCRIPTION
NH	NH JR
DESIGN	DRAWN CHKD
SCALE	H: AS SHOWN V:
JOB No. 140253-01-001	
DATE : SEPTEMBER, 2023	
FILE No. 140253-D-ZP-001	



MD GRID NORTH (NAD83/2011)
 VERTICAL DATUM NAVD 88



TRAFFIC CONTROL NOTES:

- SIGNS SHALL BE INSTALLED PRIOR TO THE COMMENCEMENT OF WORK AND REMOVED AFTER COMPLETION OF CONSTRUCTION ACTIVITIES.
- CONTRACTOR MUST FOLLOW ALL CURRENT MDOT SHA MOT STANDARDS AND TEMPORARY TRAFFIC CONTROL STANDARDS.
- PEDESTRIAN ACCESS TO DENOTED WALKWAYS TO BE MAINTAINED AT ALL TIMES.
- THIS PLAN IS FOR ON ROAD EXCAVATION AND WORK.
- THE DEVELOPER SHALL IMPLEMENT EACH APPROVED MOT. EXCEPTIONS MAY BE MADE ONLY DURING AN EMERGENCY AS DEFINED BELOW. DURING ACTUAL DEMOLITION WHEN INSPECTION SERVICES DIVISION HAS DETERMINED THAT PEDESTRIAN ACCESS ADJACENT TO THE SITE SHOULD BE LIMITED FOR SAFETY REASONS, AND FOR SUCH LIMITED PERIODS AS ARE UNAVOIDABLE FOR UTILITY UPGRADES. "EMERGENCY" STREET CLOSURES MAY INCLUDE, BUT NOT BE LIMITED TO, THOSE RELATING TO RUPTURE OR POTENTIAL RUPTURE OF A WATER OR GAS MAIN, UNSECURED BUILDING FACADE, OR SIMILAR UNFORESEEABLE PUBLIC DANGER. "EMERGENCY" STREET CLOSURES SHALL NOT INCLUDE CLOSURES FOR SETTING UP OR DISMANTLING OF A CRANE, EXTERIOR BUILDING CONSTRUCTION, MATERIALS DELIVERIES, UTILITIES WORK, OR SIMILAR SITUATIONS.
- THE CONTRACTOR WILL MAINTAIN AND MAKE REVISIONS TO THE MAINTENANCE OF TRAFFIC PLAN AS NECESSARY AT THE APPROVAL OF THE COUNTY INSPECTOR.

FIRE DEPARTMENT NOTES

- ALL EXISTING FIRE HYDRANTS AND FIRE DEPARTMENT CONNECTIONS SHALL BE MAINTAINED UNOBSTRUCTED AND ACCESSIBLE AT ALL TIMES IN ACCORDANCE WITH SECTION 18.3.4 OF THE ANNE ARUNDEL COUNTY FIRE PREVENTION CODE.
- ACCESS TO BUILDINGS FOR FIREFIGHTING SHALL BE MAINTAINED AT ALL TIMES. EXISTING FIRE APPARATUS ACCESS ROADS (FIRE LANES) SHALL BE KEPT CLEAR OF OBSTRUCTIONS IN ACCORDANCE WITH SECTION 18.2.2.3.2 OF THE ANNE ARUNDEL COUNTY FIRE PREVENTION CODE. ACCESS TO CONSTRUCTION SITES SHALL BE PROVIDED AND MAINTAINED IN ACCORDANCE WITH SECTION 18.2.2.3.2 OF THE ANNE ARUNDEL COUNTY FIRE PREVENTION CODE.
- IN THE EVENT THAT EXISTING FIRE DEPARTMENT CONNECTIONS OR FIRE APPARATUS ACCESS ROADS (FIRE LANES) MUST BE OBSTRUCTED TO FACILITATE CONSTRUCTION ACTIVITIES, CONTACT THE ANNE ARUNDEL COUNTY FIRE DEPARTMENT FIRE PREVENTION OFFICE AT (410) 222-7000 TO COORDINATE REVIEW AND APPROVAL OF TEMPORARY FIRE DEPARTMENT CONNECTIONS AND/OR FIRE APPARATUS ACCESS ROADS PRIOR TO CREATING THE OBSTRUCTION.

MOT PHASE I NARRATIVE:

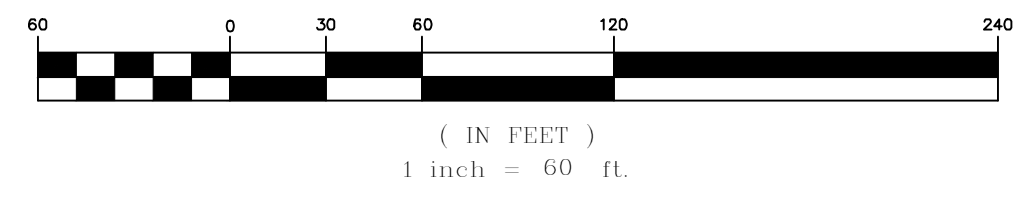
ACTIVITIES THAT WILL OCCUR IN THIS PHASE WILL INCLUDE: THE INSTALLATION OF APPROXIMATELY 20 LF OF THE SANITARY SEWER CONNECTION STARTING AT THE MANHOLE IN THE CENTER LANE OF THE WESTBOUND SIDE OF LIVINGSTON ROAD. A MODIFIED MD 104.03-08 TO TEMPORARILY CLOSE THE ENTIRE WESTBOUND SIDE OF LIVINGSTON ROAD WILL BE IMPLEMENTED IN THIS PHASE.

ESTIMATED DURATION: 2 DAYS

LEGEND:

- ● ● ● ● TRAFFIC DRUMS/CONES
- ▨ WORK SITE
- ↑ SIGN
- ← DIRECTION OF TRAFFIC

GRAPHIC SCALE



MD GRID NORTH (NAD83/2011)
VERTICAL DATUM NAVD 88

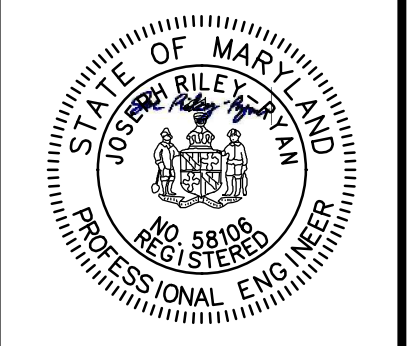


Bowman Consulting Group, Ltd.
13461 Sunrise Valley Drive
Suite 500
Herndon, Virginia 20171
Phone: (703) 464-1000
Fax: (703) 481-9720
www.bowman.com
© Bowman Consulting Group, Ltd.

**MAINTENANCE OF TRAFFIC PHASE I
MOT PLAN**

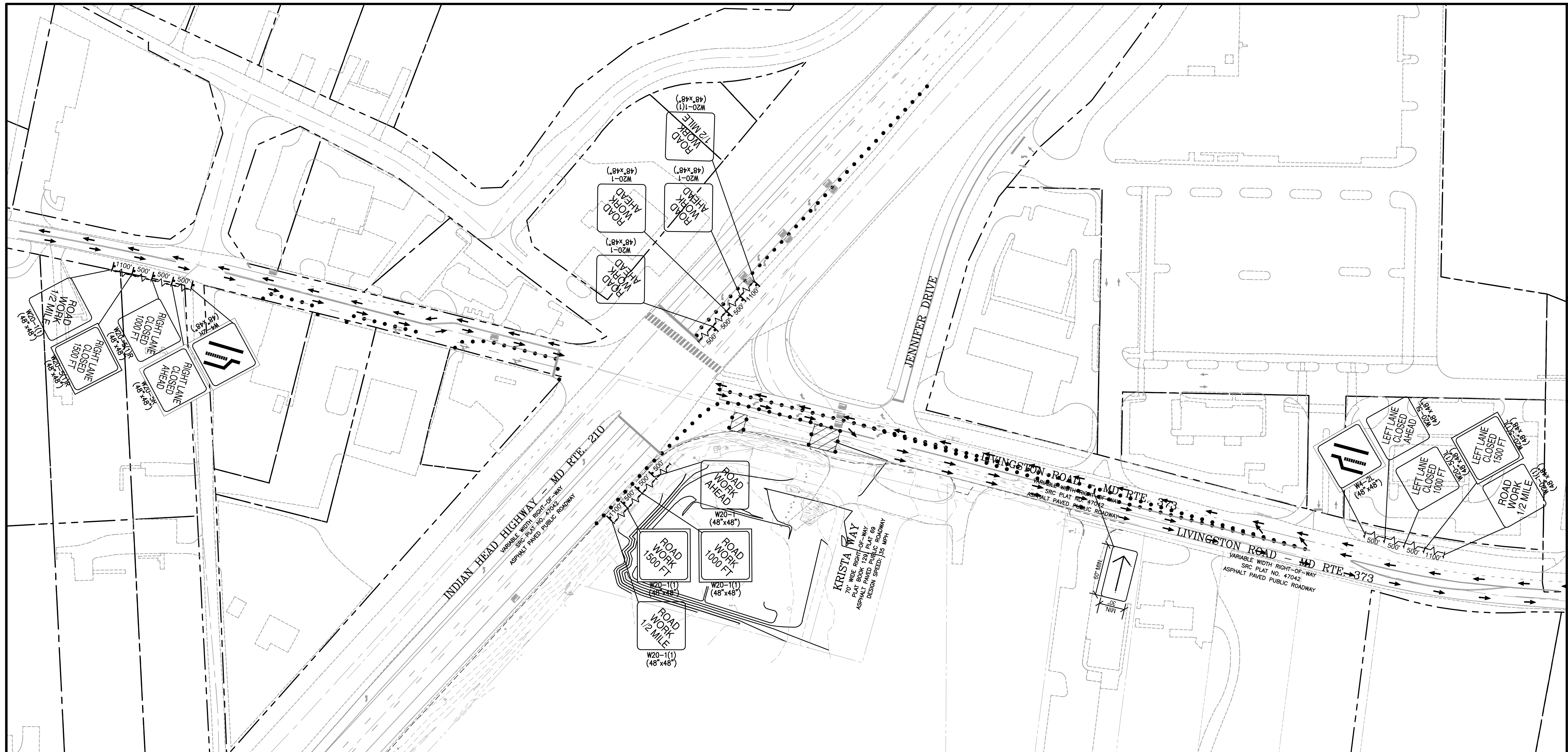
16001 KRISTA WAY, ACCOKEEK, MARYLAND 20607
PRINCE GEORGES COUNTY, MARYLAND

COUNTY PROJECT NUMBER



PLAN STATUS
9/8/23 MOT 1ST SUBMISSION

DATE	DESCRIPTION
NH	NH JR
DESIGN	DRAWN CHKD
SCALE	H: AS SHOWN V:
JOB No.	140253-01-001
DATE :	SEPTEMBER, 2023
FILE No.	140253-D-ZP-001



TRAFFIC CONTROL NOTES:

- SIGNS SHALL BE INSTALLED PRIOR TO THE COMMENCEMENT OF WORK AND REMOVED AFTER COMPLETION OF CONSTRUCTION ACTIVITIES.
- CONTRACTOR MUST FOLLOW ALL CURRENT MDOT SHA MOT STANDARDS AND TEMPORARY TRAFFIC CONTROL STANDARDS.
- PEDESTRIAN ACCESS TO DENOTED WALKWAYS TO BE MAINTAINED AT ALL TIMES.
- THIS PLAN IS FOR ON ROAD EXCAVATION AND WORK.
- THE DEVELOPER SHALL IMPLEMENT EACH APPROVED MOT. EXCEPTIONS MAY BE MADE ONLY DURING AN EMERGENCY AS DEFINED BELOW. DURING ACTUAL DEMOLITION WHEN INSPECTION SERVICES DIVISION HAS DETERMINED THAT PEDESTRIAN ACCESS ADJACENT TO THE SITE SHOULD BE LIMITED FOR SAFETY REASONS, AND FOR SUCH LIMITED PERIODS AS ARE UNAVOIDABLE FOR UTILITY UPGRADES. "EMERGENCY" STREET CLOSURES MAY INCLUDE, BUT NOT BE LIMITED TO, THOSE RELATING TO RUPTURE OR POTENTIAL RUPTURE OF A WATER OR GAS MAIN, UNSECURED BUILDING FACADE, OR SIMILAR UNFORSEEABLE PUBLIC DANGER. "EMERGENCY" STREET CLOSURES SHALL NOT INCLUDE CLOSURES FOR SETTING UP OR DISMANTLING OF A CRANE, EXTERIOR BUILDING CONSTRUCTION, MATERIALS DELIVERIES, UTILITIES WORK, OR SIMILAR SITUATIONS.
- THE CONTRACTOR WILL MAINTAIN AND MAKE REVISIONS TO THE MAINTENANCE OF TRAFFIC PLAN AS NECESSARY AT THE APPROVAL OF THE COUNTY INSPECTOR.

FIRE DEPARTMENT NOTES

- ALL EXISTING FIRE HYDRANTS AND FIRE DEPARTMENT CONNECTIONS SHALL BE MAINTAINED UNOBSTRUCTED AND ACCESSIBLE AT ALL TIMES IN ACCORDANCE WITH SECTION 18.3.4 OF THE ANNE ARUNDEL COUNTY FIRE PREVENTION CODE.
- ACCESS TO BUILDINGS FOR FIREFIGHTING SHALL BE MAINTAINED AT ALL TIMES. EXISTING FIRE APPARATUS ACCESS ROADS (FIRE LANES) SHALL BE KEPT CLEAR OF OBSTRUCTIONS IN ACCORDANCE WITH SECTION 18.2.2.3.2 OF THE ANNE ARUNDEL COUNTY FIRE PREVENTION CODE. ACCESS TO CONSTRUCTION SITES SHALL BE PROVIDED AND MAINTAINED IN ACCORDANCE WITH SECTION 18.2.2.3.2 OF THE ANNE ARUNDEL COUNTY FIRE PREVENTION CODE.
- IN THE EVENT THAT EXISTING FIRE DEPARTMENT CONNECTIONS OR FIRE APPARATUS ACCESS ROADS (FIRE LANES) MUST BE OBSTRUCTED TO FACILITATE CONSTRUCTION ACTIVITIES, CONTACT THE ANNE ARUNDEL COUNTY FIRE DEPARTMENT FIRE PREVENTION OFFICE AT (410) 222-7000 TO COORDINATE REVIEW AND APPROVAL OF TEMPORARY FIRE DEPARTMENT CONNECTIONS AND/OR FIRE APPARATUS ACCESS ROADS PRIOR TO CREATING THE OBSTRUCTION.

MOT PHASE II NARRATIVE:

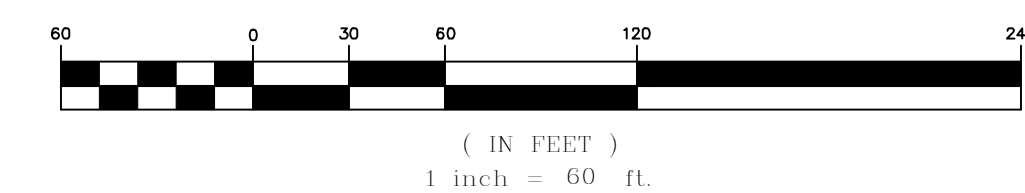
ACTIVITIES THAT WILL OCCUR IN THIS PHASE WILL INCLUDE: THE INSTALLATION OF APPROXIMATELY 22+ LF OF THE SANITARY SEWER CONNECTION STARTING AT THE END OF PIPE AT CENTER OF LIVINGSTON ROAD INSTALLED IN PHASE I. ALSO INSTALLATION OF APPROXIMATELY 11+ LF OF WATER CONNECTION, LINKING TO AN EXISTING 16" WATER MAIN. A MODIFIED MD 104.03-12 TO TEMPORARILY CLOSE THE ENTIRE EASTBOUND SIDE OF LIVINGSTON ROAD WILL BE IMPLEMENTED IN THIS PHASE.

ESTIMATED DURATION: 3 DAYS

LEGEND:

- TRAFFIC DRUMS/CONES
- WORK SITE
- SIGN
- ARROW BOARD
- DIRECTION OF TRAFFIC

GRAPHIC SCALE



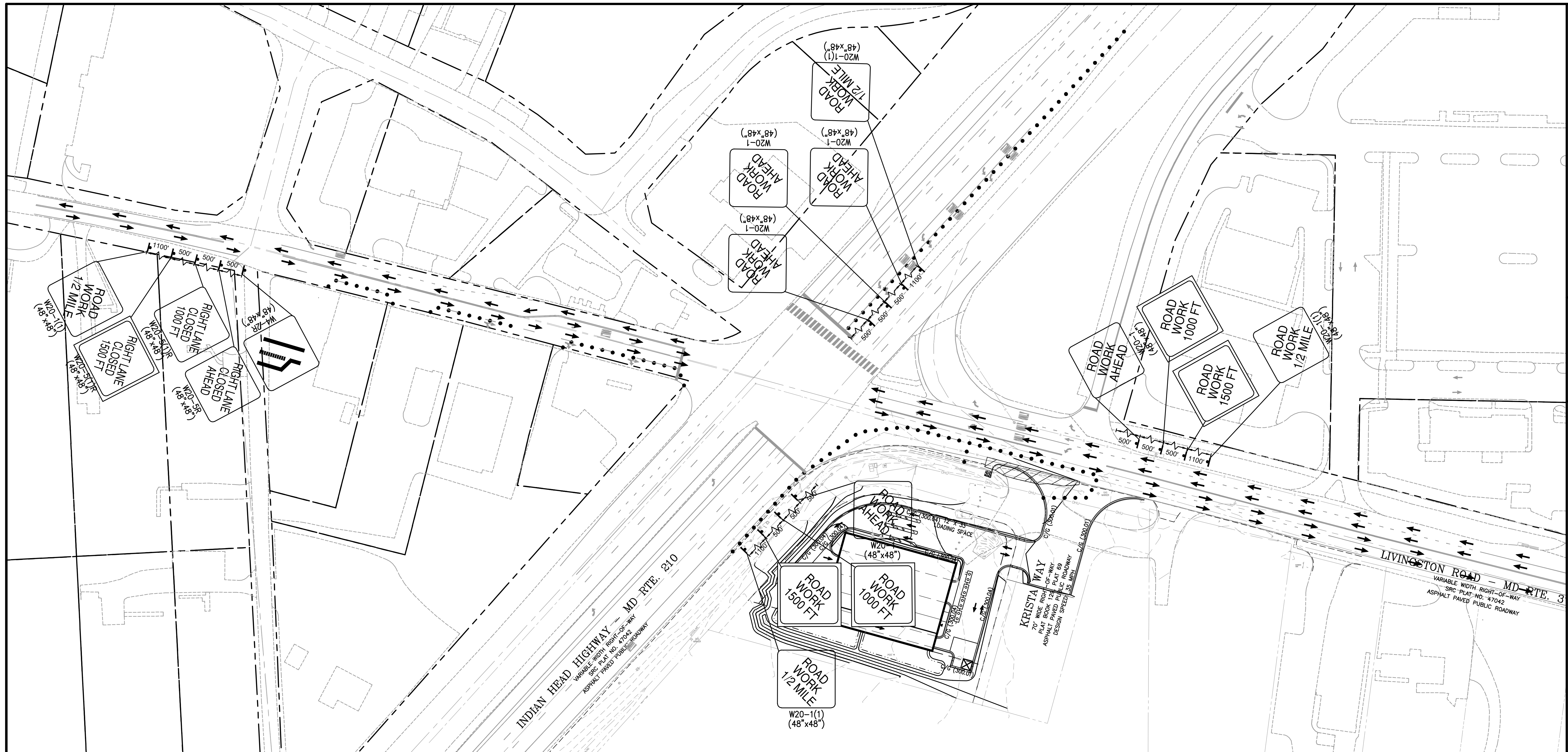
MD GRID NORTH (NAD83 / 2011)
VERTICAL DATUM NAVD 88

COUNTY PROJECT NUMBER



PLAN STATUS
9/8/23 MOT 1ST SUBMISSION

DATE	DESCRIPTION
NH	NH JR
DESIGN	DRAWN CHKD
SCALE	H: AS SHOWN V:
JOB No.	140253-01-001
DATE :	SEPTEMBER, 2023
FILE No.	140253-D-ZP-001



TRAFFIC CONTROL NOTES:

1. SIGNS SHALL BE INSTALLED PRIOR TO THE COMMENCEMENT OF WORK AND REMOVED AFTER COMPLETION OF CONSTRUCTION ACTIVITIES.
2. CONTRACTOR MUST FOLLOW ALL CURRENT MDT SHA MOT STANDARDS AND TEMPORARY TRAFFIC CONTROL STANDARDS.
3. PEDESTRIAN ACCESS TO DENOTED WALKWAYS TO BE MAINTAINED AT ALL TIMES.
4. THIS PLAN IS FOR ON ROAD EXCAVATION AND WORK.
5. THE DEVELOPER SHALL IMPLEMENT EACH APPROVED MOT. EXCEPTIONS MAY BE MADE ONLY DURING AN EMERGENCY AS DEFINED BELOW. DURING ACTUAL DEMOLITION WHEN INSPECTION SERVICES DIVISION HAS DETERMINED THAT PEDESTRIAN ACCESS ADJACENT TO THE SITE SHOULD BE LIMITED FOR SAFETY REASONS, AND FOR SUCH LIMITED PERIODS AS ARE UNAVOIDABLE FOR UTILITY UPGRADES. "EMERGENCY" STREET CLOSURES MAY INCLUDE, BUT NOT BE LIMITED TO, THOSE RELATING TO RUPTURE OR POTENTIAL RUPTURE OF A WATER OR GAS MAIN, UNSECURED BUILDING FACADE, OR SIMILAR UNFORESEEABLE PUBLIC DANGER. "EMERGENCY" STREET CLOSURES SHALL NOT INCLUDE CLOSURES FOR SETTING UP OR DISMANTLING OF A CRANE, EXTERIOR BUILDING CONSTRUCTION, MATERIALS DELIVERIES, UTILITIES WORK, OR SIMILAR SITUATIONS.
6. THE CONTRACTOR WILL MAINTAIN AND MAKE REVISIONS TO THE MAINTENANCE OF TRAFFIC PLAN AS NECESSARY AT THE APPROVAL OF THE COUNTY INSPECTOR.

FIRE DEPARTMENT NOTES

1. ALL EXISTING FIRE HYDRANTS AND FIRE DEPARTMENT CONNECTIONS SHALL BE MAINTAINED UNOBSTRUCTED AND ACCESSIBLE AT ALL TIMES IN ACCORDANCE WITH SECTION 18.3.4 OF THE ANNE ARUNDEL COUNTY FIRE PREVENTION CODE.
2. ACCESS TO BUILDINGS FOR FIREFIGHTING SHALL BE MAINTAINED AT ALL TIMES. EXISTING FIRE APPARATUS ACCESS ROADS (FIRE LANES) SHALL BE KEPT CLEAR OF OBSTRUCTIONS IN ACCORDANCE WITH SECTION 18.2.2.3.2 OF THE ANNE ARUNDEL COUNTY FIRE PREVENTION CODE. ACCESS TO CONSTRUCTION SITES SHALL BE PROVIDED AND MAINTAINED IN ACCORDANCE WITH SECTION 18.2.2.3.2 OF THE ANNE ARUNDEL COUNTY FIRE PREVENTION CODE.
3. IN THE EVENT THAT EXISTING FIRE DEPARTMENT CONNECTIONS OR FIRE APPARATUS ACCESS ROADS (FIRE LANES) MUST BE OBSTRUCTED TO FACILITATE CONSTRUCTION ACTIVITIES, CONTACT THE ANNE ARUNDEL COUNTY FIRE DEPARTMENT FIRE PREVENTION OFFICE AT (410) 222-7000 TO COORDINATE REVIEW AND APPROVAL OF TEMPORARY FIRE DEPARTMENT CONNECTIONS AND/OR FIRE APPARATUS ACCESS ROADS PRIOR TO CREATING THE OBSTRUCTION.

MOT PHASE III NARRATIVE:

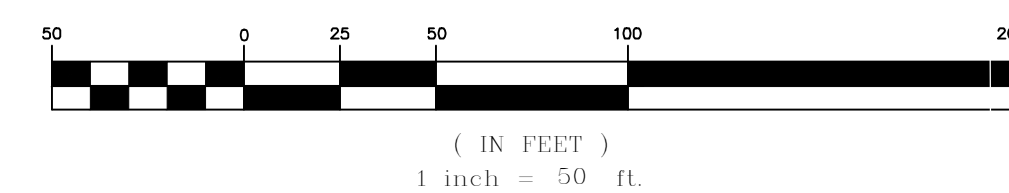
ACTIVITIES THAT WILL OCCUR IN THIS PHASE WILL INCLUDE: ENTRANCE/ROADWAY IMPROVEMENTS ON THE WESTERN CORNER OF THE PROPOSED INTERSECTION OF LIVINGSTON ROAD AND KRISTA WAY. A MODIFIED MD 104.03-12 TO TEMPORARILY CLOSE THE OUTER EASTBOUND LANE OF LIVINGSTON ROAD WILL BE IMPLEMENTED IN THIS PHASE.

ESTIMATED DURATION: 3 DAYS

LEGEND:

- TRAFFIC DRUMS/CONES
- ▨ WORK SITE
- ↑ SIGN
- DIRECTION OF TRAFFIC

GRAPHIC SCALE



MD GRID NORTH (NAD83/2011)
VERTICAL DATUM NAVD 88



Bowman Consulting Group, Ltd.
13461 Sunrise Valley Drive
Suite 500
Herndon, Virginia 20171
Phone: (703) 464-1000
Fax: (703) 481-9720
www.bowman.com
© Bowman Consulting Group, Ltd.

MAINTENANCE OF TRAFFIC PHASE III

MOT PLAN

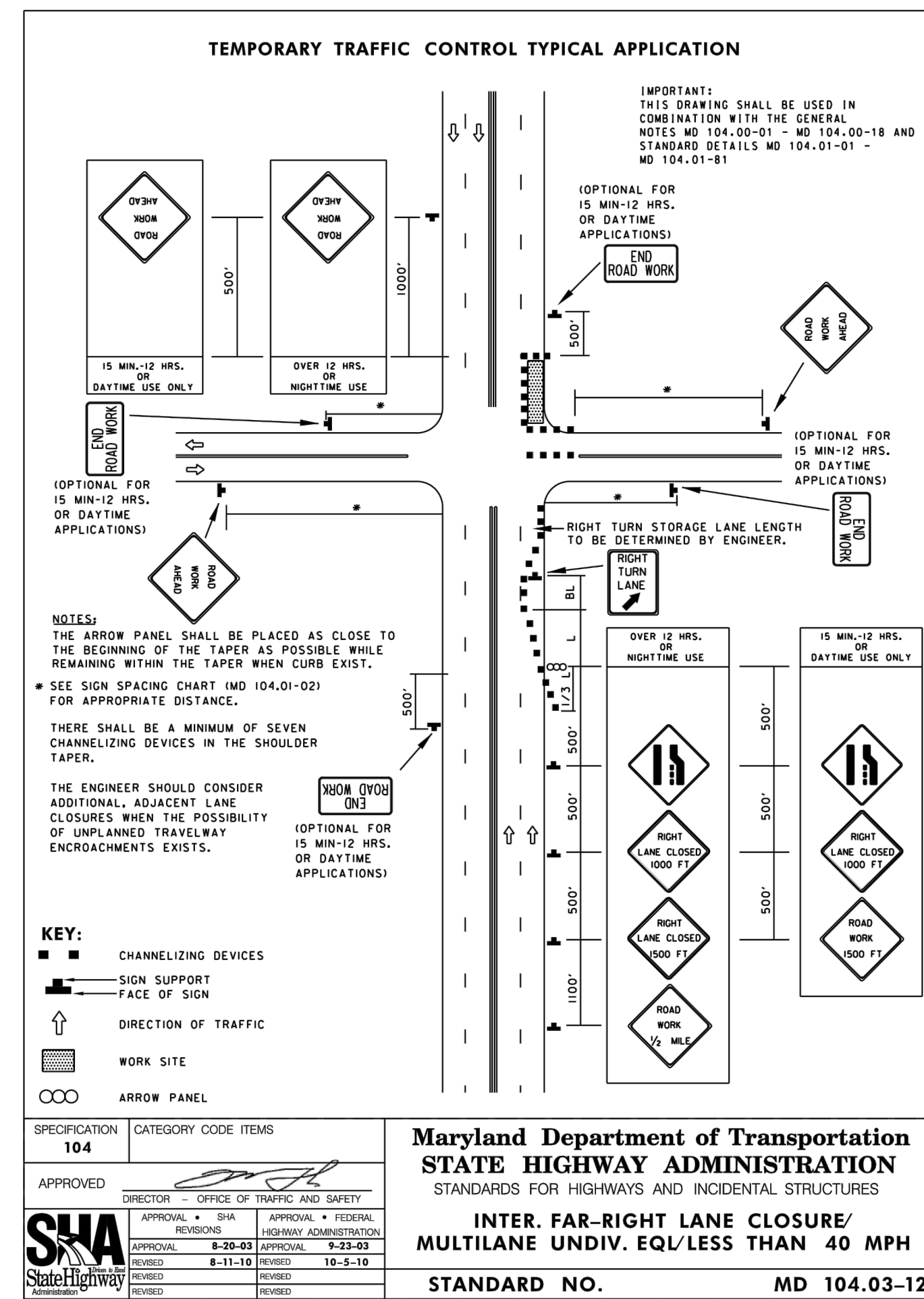
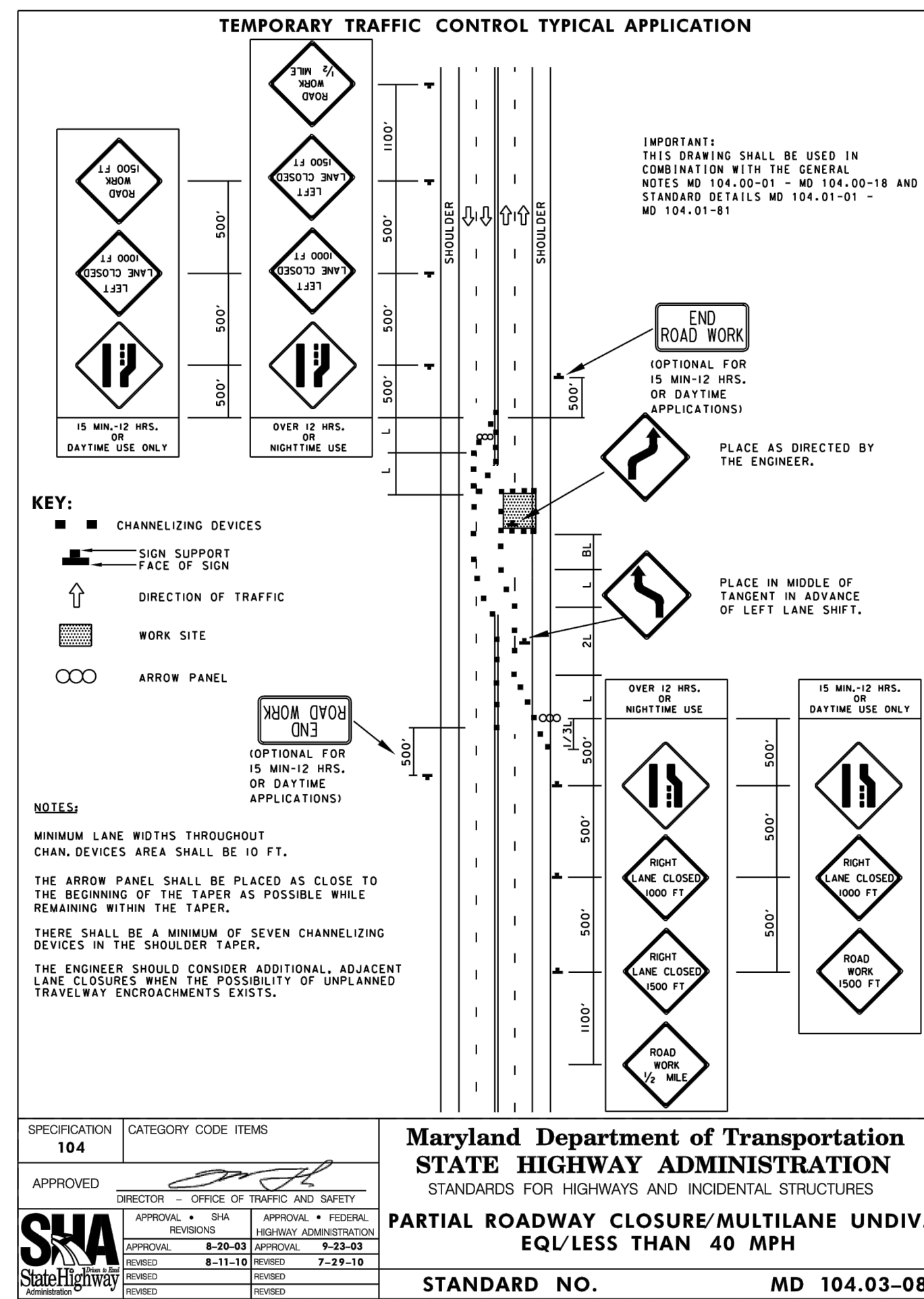
16001 KRISTA WAY, ACCOKEEK, MARYLAND 20607
PRINCE GEORGES COUNTY, MARYLAND

COUNTY PROJECT NUMBER



PLAN STATUS	
9/8/23	MOT 1ST SUBMISSION

DATE	DESCRIPTION
NH DESIGN	NH DRAWN JR CHKD
SCALE	H: AS SHOWN V:
JOB No.	140253-01-001
DATE :	SEPTEMBER, 2023
FILE No.	140253-D-ZP-001



TEMPORARY TRAFFIC CONTROL TYPICAL APPLICATION
TEMPORARY TRAFFIC CONTROL DEVICE SELECTION CHART

MULTILANE UNDIVIDED

LOCATION OF WORK	SPEED	DURATION	STANDARD TRAFFIC CONTROL DEVICES														
			FLAGGER	VEHICLE LOTS	MARKINGS	ARROW PANEL	CHAN. DEVICES	PORTABLE W/S	NEXT MILES	1 MILE	1/2 MILE	1000 FT	800 FT	500 FT	AHEAD	BOTH SIDES	PROTECTION VEH
ON ROAD	> 40 MPH	> 12 HRS/DARK															
		15 MIN-12 HRS/DAY	X	X	X	X	X	X	X	X	X	X	X	X	X	X	X
		< 15 MIN/LOC	X	X	X	X	X	X	X	X	X	X	X	X	X	X	X
		MOVING SLOW	X	X	X	X	X	X	X	X	X	X	X	X	X	X	X
ON ROAD	≤ 40 MPH	> 12 HRS/DARK															
		15 MIN-12 HRS/DAY	X	X	X	X	X	X	X	X	X	X	X	X	X	X	X
		< 15 MIN/LOC	X	X	X	X	X	X	X	X	X	X	X	X	X	X	X
		MOVING SLOW	X	X	X	X	X	X	X	X	X	X	X	X	X	X	X
ADJ TO ROAD	> 40 MPH	> 12 HRS/DARK															
		15 MIN-12 HRS/DAY	X	X	X	X	X	X	X	X	X	X	X	X	X	X	X
		< 15 MIN/LOC	X	X	X	X	X	X	X	X	X	X	X	X	X	X	X
		MOVING SLOW	X	X	X	X	X	X	X	X	X	X	X	X	X	X	X
ADJ TO ROAD	≤ 40 MPH	> 12 HRS/DARK															
		15 MIN-12 HRS/DAY	X	X	X	X	X	X	X	X	X	X	X	X	X	X	X
		< 15 MIN/LOC	X	X	X	X	X	X	X	X	X	X	X	X	X	X	X
		MOVING SLOW	X	X	X	X	X	X	X	X	X	X	X	X	X	X	X

KEY: X - REQUIRED, / - OPTIONAL

- * TRAVELING BELOW THE POSTED SPEED (BY MORE THAN 15 MPH)
- ** FOR MOVING OPERATIONS THE APPROPRIATE ADVANCE WARNING SIGNS MAY BE VEHICLE MOUNTED.
- *** WITHIN 15' OF THE EDGE LINE OR WITHIN 2' BEHIND THE FACE OF CURB
- **** PROTECTION VEHICLE SHALL BE USED ON MULTILANE UNDIVIDED ROADWAYS WITH POSTED SPEEDS GREATER THAN OR EQUAL TO 55 MPH IN CONFORMANCE WITH SECTION 10.4 OF THE GENERAL NOTES.

Maryland Department of Transportation STATE HIGHWAY ADMINISTRATION
STANDARDS FOR HIGHWAYS AND INCIDENTAL STRUCTURES
TEMPORARY TRAFFIC CONTROL DEVICE SELECTION CHART
STANDARD NO. MD 104.01-09

TEMPORARY TRAFFIC CONTROL TYPICAL APPLICATION

SPEED IN MPH	MIN. MERGING TAPER (L) (LENGTH/* DEVICES)				BUFFER (BL) (LENGTH/* DEVICES)	
	9	10	11	12	ALL WIDTHS	
30	135	150	165	180	200	5
	6	6	7	7		
35	184	205	225	245	250	5
	7	7	8	8		
40	240	267	294	320	305	5
	7	8	9	9		
45	405	450	495	540	360	6
	11	12	13	15		
50	450	500	550	600	425	6
	12	14	15	16		
55	495	550	605	660	495	7
	13	15	16	18		
60	1000			26	570	8
65	1000			26	645	9
70	1000			26	730	10
75	1000			26	820	11

* DEVICES = (LENGTH / DEVICE SPACING) + 1

SHOULDER TAPER = 1/3L.
MINIMUM 7 DEVICES

Maryland Department of Transportation STATE HIGHWAY ADMINISTRATION
STANDARDS FOR HIGHWAYS AND INCIDENTAL STRUCTURES
CHANNELIZATION DEVICE USAGE CRITERIA TABLE
STANDARD NO. MD 104.01-30 D

N
MD GRID NORTH (NAD83/2011)
VERTICAL DATUM NAVD 88

Bowman Consulting Group, Ltd.
13461 Sunrise Valley Drive
Suite 500
Herndon, Virginia 20171
Phone: (703) 464-1000
Fax: (703) 481-9720
www.bowman.com
© Bowman Consulting Group, Ltd.

DETAIL
MOT PLAN
16001 KRISTA WAY, ACCOKEEK, MARYLAND 20607
PRINCE GEORGES COUNTY, MARYLAND

COUNTY PROJECT NUMBER



PLAN STATUS
9/8/23 MOT 1ST SUBMISSION

DATE	DESCRIPTION
NH DESIGN	NH DRAWN
JR	CHKD
SCALE: H: AS SHOWN	
JOB No. 140253-01-001	
DATE: SEPTEMBER, 2023	
FILE No. 140253-D-ZP-001	